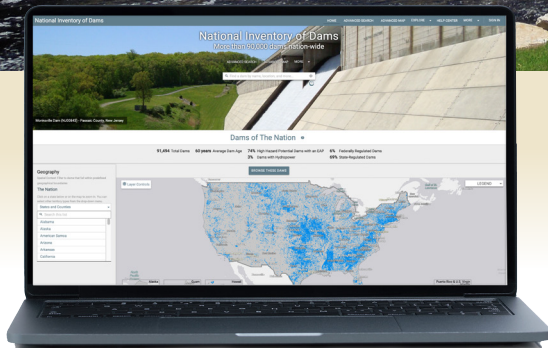




US Army Corps  
of Engineers®

# NATIONAL INVENTORY OF DAMS

Glasgow Pond Dam, Connecticut



## WHAT IS THE NID?

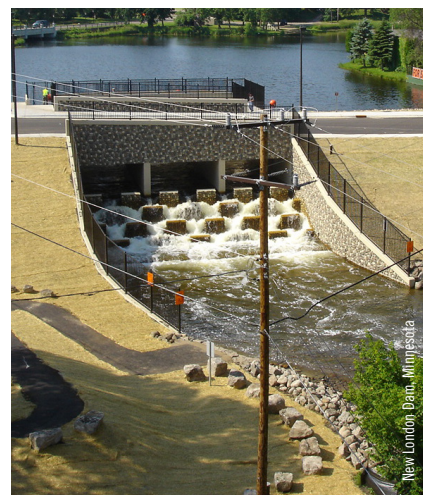
The National Inventory of Dams (NID) is a congressionally authorized database that documents more than 91,000 dams across the U.S. and its territories. It is maintained and published by the U.S. Army Corps of Engineers, in cooperation with the Association of State Dam Safety Officials, the states, territories, and federal agencies.

## KEY DATA IN THE NID

The database contains more than 70 data fields for each dam. This includes the dam's location, size, purpose, type, last inspection, and regulatory facts. Additional information is available for some dams such as a general description of the dam, summary of known issues, and planned actions to address them. Maps that show possible flooding near dams, also called flood inundation maps, are available for some dams. These maps show where water may go if a dam-related issue occurs and can help those living and working near dams take protective actions.

## MEETING MODERN DAY NEEDS

The NID is the central information source for dams in the U.S. and its territories. Recent updates to the site support a wider variety of users, such as emergency managers, safety professionals, infrastructure owners, community leaders, business owners, and residents, understand the relationship between dams and their surrounding communities.



New London Dam, Minnesota

*Find out where dams are, what they were  
designed to do, and who manages them.*

# NID FEATURES

- ✓ Key data on dams in the U.S.
- ✓ Public sharing of dam flood inundation maps
- ✓ Real-time data input and download
- ✓ User-friendly search functions
- ✓ Help desk for site users

East Lynn Dam, West Virginia

## DAM FLOOD INUNDATION MAPS

Find, view, share, and download maps that show areas that could be flooded upstream and downstream of dams. Users can view these maps within the NID or use an advanced mapping tool to customize a more detailed view.

## REAL-TIME DATA INPUT AND DOWNLOAD

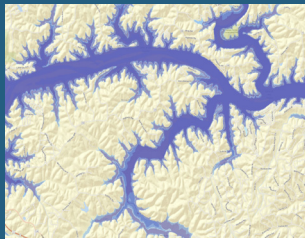
Now agencies can update data in real-time by logging into the site, creating a dynamic database that reflects best available information. Users can expect fresher data that can be downloaded and shared at any time.

## USER-FRIENDLY SEARCH FUNCTIONS

Search capabilities include simple key word searches using easy-to-use filters. Users can quickly access the information available for each dam because it is organized and visually presented by category.

## HELPFUL TOOLS AND RESOURCES

A variety of tools are available to support your data needs including an overview of the site, tutorial explaining how to use the site, and help desk. The site also features resources that explain how dams work, their benefits and risks, and who manages dams.



## About Dam Flood Inundation Maps

Flooding near dams can occur when there is too much water for the dam to hold, requiring larger than normal amounts of water to be released from the dam. Flooding can also occur if there is an operational or structural issue at the dam. These maps can help identify people and structures at risk to enhance local actions in advance of a dam-related flood.



Arack Diversion Dam, Oregon



SCAN ME

## QUESTIONS ABOUT THE NID?

Contact the NID Team at [NID@usace.army.mil](mailto:NID@usace.army.mil).